

LED Light Kit

Install Instructions for LIGHT-KT



THE OUTDOOR
GREATROOM
COMPANY

Table of Contents

Included With This Kit.....	3
Setup Instructions.....	4-5
Wiring Diagram.....	5
Install Instructions.....	6
Install Diagram.....	7
Service Parts and Optional Components.....	8

Included With This Kit



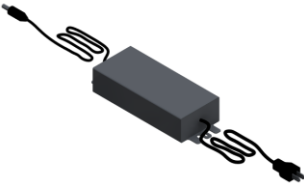
24" LED Strip with 24" extension wire attached, 4 pin female connector and foam adhesive backing
(X2)



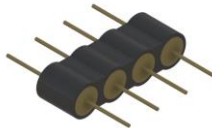
LED controller and Remote
(X1 Each)



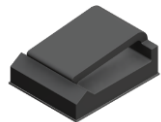
Power Splitter with 4 pin female connectors
(X1)



110V to 12V DC ,
40 W power supply
(X1)



4 Pin Male Connectors
(X10)



Plastic Wire Clips
(X10)

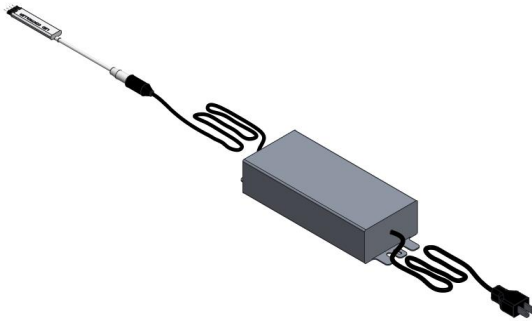
Setup Instructions

Before installing Light Kit, remove all components from box and make sure all components are included and working properly.

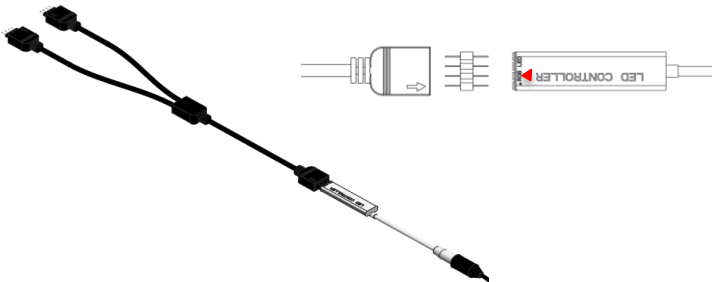
Avoid Bending Strips at sharp angles, this can put stress on the strip and cause it to fail over time

Keep wires away from hot surfaces of burner

1. Plug LED controller into Power Supply (or optional rechargeable battery pack).

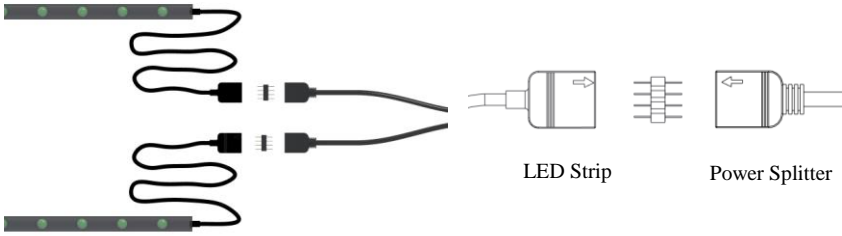


2. Plug power splitter into LED controller using 4 pin male connector. Note the orientation of the power splitter plug and LED controller, align arrow on splitter plug with red triangle on controller.



Align arrow with red triangle on controller

3. Plug LED light strips into power splitter using 4 pin connectors. Note the orientation of the plugs, arrows on each connection should align.

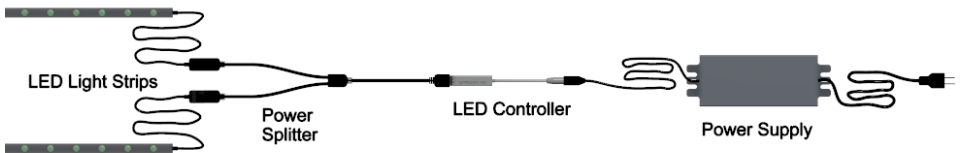


Align arrows on connections from LED strips to Power splitter.

4. To test lights, plug power source into a wall outlet, extension cord, or optional battery pack. Use the Remote to turn LEDs on/off and change colors. Refer to instructions included with remote for a full list of remote functions.

NOTE: 4-pin connections need to be properly oriented in order for LEDs to work. Make 4-pin connections as described in steps 2 and 3. If lights do not turn on, try flipping the orientation of the connection.

Wiring Diagram



Installation Instructions

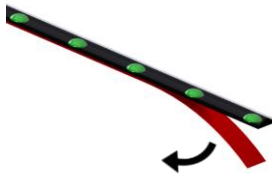
(Your installation may vary)

Before installing Light Kit, remove all components from box and make sure all components are included and working properly.

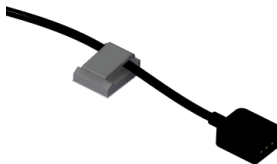
Avoid Bending Strips at sharp angles, this can put stress on the strip and cause it to fail over time

Keep wires away from hot surfaces of burner

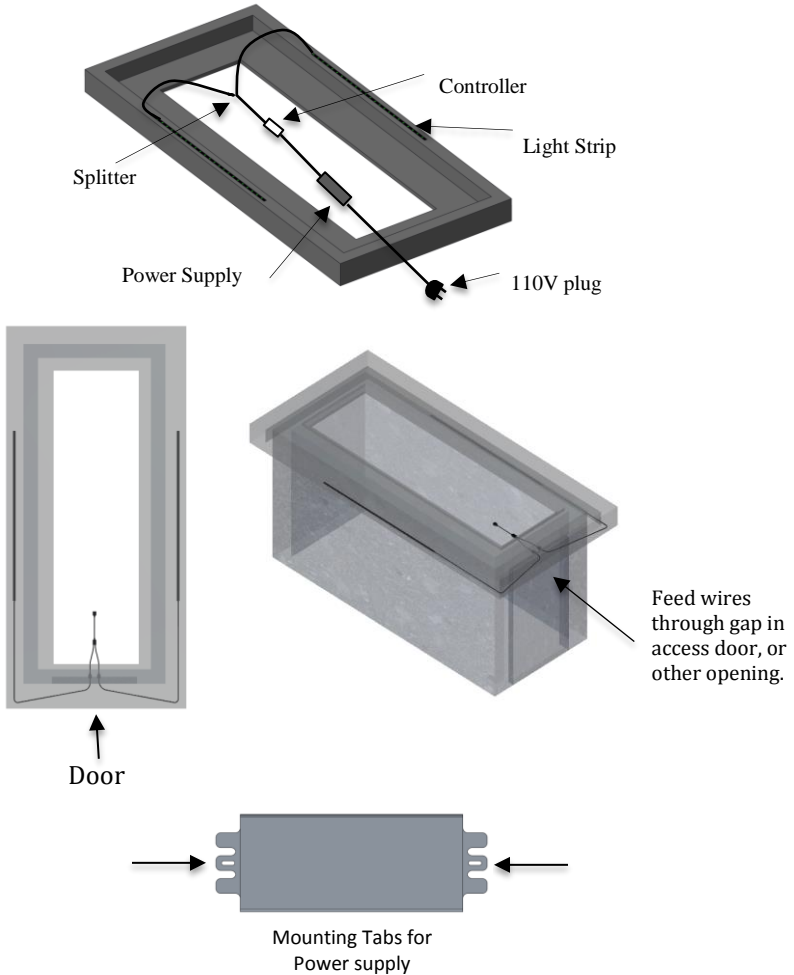
1. Lay out LED strips and wiring to ensure you have enough wiring to complete your installation.
2. Ensure mounting surfaces are clean and free of debris. Use rubbing alcohol to remove dirt and dust from surfaces.
 - Adhesive backing will stick to glass, supercast, granite, wood, metal and most other surfaces.
 - For a more permanent bond, any liquid adhesive that is compatible with your mounting surface will work.
3. Remove plastic backing on LED strips to expose adhesive foam.



4. Adhere LED strips to the desired mounting surface, press firmly on the strips to ensure good adhesion of the foam backing to the surface.
 - Use provided plastic wiring clips to secure the extension wires in the location you desire. **Keep wires away from hot surfaces of the burner and out of the way of burner connections.**



Installation Diagram



If installing Light kit on an Outdoor Greatroom Product, it is suggested to run wiring through gap in the access door in the base, in order to keep wiring hidden and out of the way. If desired, a 5/8" hole can be drilled through the base to feed LED extension wires through, and wiring can be completed inside the base. Mounting tabs on the power supply can be used to mount power supply to fire pit frame to keep it out of the way of propane tank, wires, etc...

Installation shown on Key Largo Fire Pit. Your installation may vary.

Service Parts and Optional Components

 <p>LK-01 40w power adapter</p>	 <p>LK-02 and LK-03 RGB LED controller (LK-02) and Remote (LK-03)</p>	 <p>LK-04 4-pin power splitter</p>
 <p>LK-05 2 ft. LED Light Strip w/ 2 ft. extension wire, adhesive foam backing</p>		
 <p>LK-07 Plastic Wire Mounting Clips (10pk)</p>	 <p>LK-08 4-pin connector (10pk)</p>	 <p>LK-10 2 ft. Extension wire 4 pin connector ends.</p>
 <p>LK-11 Foam Mounting Tape (Roll)</p>	 <p>LK-12 2 ft. Light Strip, 4 pin connection at each end, no extension wire, and foam adhesive backing.</p>	 <p>LK-13 Rechargeable Battery Pack (3800 mAh)</p>