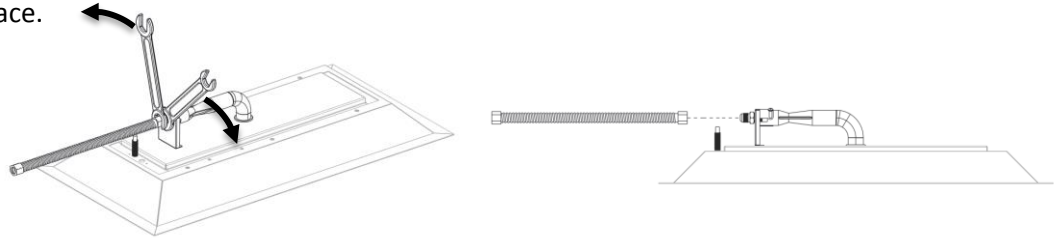


# Crystal Fire Gas Conversion Instructions

**WARNING: BEFORE ATTEMPTING GAS CONVERSION, ENSURE GAS SUPPLY IS TURNED OFF!**

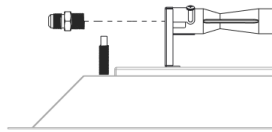
**Tools Needed: (2) adjustable wrenches, (1) Philips head screw driver**

1. Remove burner from table or fire pit, disconnect flex line from orifice and place face down on a soft surface.

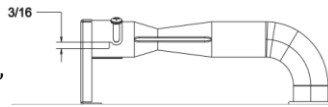


2. Remove the installed orifice and adjust the air shutter according to fuel type (closed for NG and 3/16" open for LP).

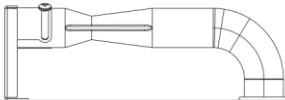
Remove orifice and loosen air shutter screw to adjust air shutter accordingly.



LP: Air Shutter open 3/16"

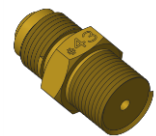


NG: Air shutter closed

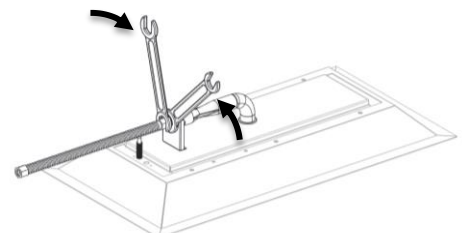


Model	Orifice Size	
	LP	NG
CF-20, NF-16	#43	#31
CF-1224, NF-719	#43	#31
CF-2424, NF-1919	#36	#17
CF-1242, NF-737	#31	#21
CF-1264	#31	#21
CF-12120, CF-1242-L	#31(2)	#21(2)
CF-30	#31	#17
CF-12	#55	#49
CF-1616	#55	#49

3. Install the orifice for the correct gas and burner type using the chart. If you do not know the model name of your burner, it is roughly the outer dimensions of your burner (ex. A CF-1224 will be roughly a 12" x 24" rectangle and a CF-20 will be roughly 20" outside diameter circle). Orifice size is located on the hex flat of the orifice fitting.



4. Reattach flexline to the orifice, using two wrenches to ensure a tight seal.
5. Replace burner into fire pit. Ensure to retighten any connections that were loosened during the process. Perform a leak check on the entire system while operating, before using your fire pit.



Remember to properly tighten connections using two wrenches.

**For additional information regarding burner installation, operation and safety please refer to your Crystal Fire Manual included with your burner.**