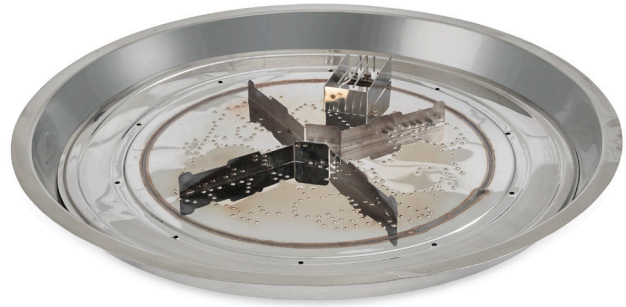


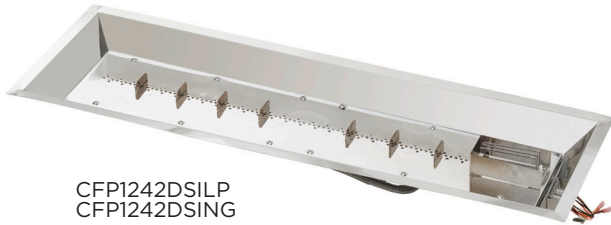
# commercial burner specifications



CFP2424DSILP  
CFP2424DSING



CFP30DSILP  
CFP30DSING



CFP1242DSILP  
CFP1242DSING



CFP1264DSILP  
CFP1264DSING

## ROUND

BURNER NAME	MODEL #	DEPTH	DIAMETER	WEIGHT	BTU's LP/NG	FIRE MEDIA**
20" Crystal Fire® Plus	CFP20DSILP or CFP20DSING	11.71"	21.06"	17.9 lbs	70,000/77,500	10 lbs
30" Crystal Fire® Plus	CFP30DSILP or CFP30DSING	11.2"	32"	25.5 lbs	101,000/100,000	25 lbs

## SQUARE

BURNER NAME	MODEL #	DEPTH	WIDTH	LENGTH	WEIGHT	BTU's LP/NG	FIRE MEDIA**
24x24" Crystal Fire® Plus	CFP2424DSILP or CFP2424DSING	14.71"	25.6"	25.6"	23.3 lbs	70,000/77,500	20 lbs

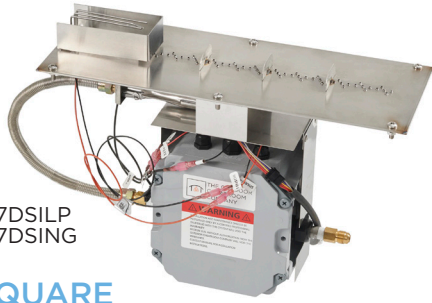
## RECTANGULAR & LINEAR

BURNER NAME	MODEL #	DEPTH	WIDTH	LENGTH	WEIGHT	BTU's LP/NG	FIRE MEDIA**
12x24" Crystal Fire® Plus	CFP1224DSILP or CFP1224DSING	14.39"	13.5"	25.63"	17 lbs	75,000/75,000	10 lbs
12x42" Crystal Fire® Plus	CFP1242DSILP or CFP1242DSING	14.38"	13.5"	42.52"	21.5 lbs	100,000/100,000	15 lbs
12x64" Crystal Fire® Plus	CFP1264DSILP or CFP1264DSING	14.38"	13.5"	64.3"	26.7 lbs	100,000/100,000	20 lbs
12x72" Crystal Fire® Plus	CFP1272DSILP or CFP1272DSING	14.38"	13.5"	72"	29.7 lbs	100,000/100,000	25 lbs
12x84" Crystal Fire® Plus	CFP1284DSILP or CFP1284DSING	14.38"	13.5"	84"	33.1 lbs	120,000/120,000	25 lbs
12x96" Crystal Fire® Plus	CFP1296DSILP or CFP1296DSING	14.38"	13.5"	96"	36.5 lbs	130,000/130,000	30 lbs
12x108" Crystal Fire® Plus	CFP12108DSILP or CFP12108DSING	14.38"	13.5"	108"	39.9 lbs	140,000/140,000	35 lbs
12x120" Crystal Fire® Plus	CFP12120DSILP or CFP12120DSING	14.38"	13.5"	120"	43.3 lbs	140,000/140,000	40 lbs
56" Wave	WV-56-LP or WV-56-NG	13.88"	8"	55.63"	14 lbs	150,000/150,000	15 lbs

\*\*Depending on your application, you may need more or less fire media than the suggested amount

# commercial insert & plate specifications

BI737DSILP  
BI737DSING



BP1236



## ROUND & SQUARE

BURNER NAME	MODEL #	OPTIONAL PLATE	DEPTH	WIDTH	LENGTH	WEIGHT	MAX BTU's LP/NG	FIRE MEDIA***
<b>16" Round Crystal Fire® Plus Insert</b>	<b>BI16DSILP or BI16DSING</b>		<b>15.3"</b>	<b>15.87"</b>	<b>15.87"</b>	<b>12.3 lbs</b>	<b>70,000/77,500</b>	<b>10 lbs</b>
<b>Round Plates</b>								
20" Round Burner Plate*		BP20RD	15.3"	20"	20"	17.2 lbs	70,000/77,500	10 lbs
24" Round Burner Plate*		BP24RD	15.3"	24"	24"	21.1 lbs	70,000/77,500	15 lbs
<b>Square Plates</b>								
24" Square Burner Plate*		BP24S	15.3"	24"	24"	17.3 lbs	70,000/77,500	25 lbs
30" Square Burner Plate*		BP30S	15.3"	30"	30"	20.3 lbs	70,000/77,500	30 lbs
<b>28" Round Crystal Fire® Plus Insert</b>	<b>BI28DSILP or BI28DSING</b>		<b>14.61"</b>	<b>28"</b>	<b>28"</b>	<b>25.9 lbs</b>	<b>101,000/100,000</b>	<b>25 lbs</b>
<b>Round Plates</b>								
30" Round Burner Plate*		BP30RD	14.61"	30"	30"	28.4 lbs	101,000/100,000	25 lbs
36" Round Burner Plate*		BP36RD	14.61"	36"	36"	37.3 lbs	101,000/100,000	30 lbs
42" Round Burner Plate*		BP42RD	14.61"	42"	42"	47.8 lbs	101,000/100,000	35 lbs
48" Round Burner Plate*		BP48RD	14.61"	48"	48"	59.9	101,000/100,000	40 lbs
<b>Square Plates</b>								
36" Square Burner Plate*		BP36S	14.61"	36"	36"	34.9 lbs	101,000/100,000	35 lbs
42" Square Burner Plate*		BP42S	14.61"	42"	42"	36.9 lbs	101,000/100,000	40 lbs

## RECTANGULAR & LINEAR

BURNER NAME	MODEL #	OPTIONAL PLATE	DEPTH	WIDTH	LENGTH	WEIGHT	BTU's LP/NG	FIRE MEDIA**
<b>7x19" Crystal Fire® Plus Insert</b>	<b>BI719DSILP or BI719DSING</b>		<b>14.24"</b>	<b>7.42"</b>	<b>19.63"</b>	<b>13.1 lbs</b>	<b>75,000/75,000</b>	<b>10 lbs</b>
12x24" Burner Plate*		BP1224	14.24"	12"	24"	16.7 lbs	75,000/75,000	15 lbs
12x36" Burner Plate*		BP1236	14.24"	12"	36"	19.2 lbs	75,000/75,000	20 lbs
<b>7x37" Crystal Fire® Plus Insert</b>	<b>BI737DSILP or BI737DSING</b>		<b>14.24"</b>	<b>7.42"</b>	<b>36.52"</b>	<b>16.8 lbs</b>	<b>100,000/100,000</b>	<b>15 lbs</b>
12x42" Burner Plate*		BP1242	14.24"	12"	42"	23 lbs	100,000/100,000	20 lbs
12x60" Burner Plate*		BP1260	14.24"	12"	60"	26.7 lbs	100,000/100,000	25 lbs
<b>7x57" Crystal Fire® Plus Insert</b>	<b>BI757DSILP or BI757DSING</b>		<b>14.39"</b>	<b>7.42"</b>	<b>57"</b>	<b>19 lbs</b>	<b>100,000/100,000</b>	<b>20 lbs</b>
12x64" Burner Plate*		BP1264	14.39"	12"	64"	28.3 lbs	100,000/100,000	25 lbs
<b>7x66" Crystal Fire® Plus Insert</b>	<b>BI766DSILP or BI766DSING</b>		<b>14.26"</b>	<b>7.42"</b>	<b>66"</b>	<b>21.7 lbs</b>	<b>100,000/100,000</b>	<b>25 lbs</b>
12x72" Burner Plate*		BP1272	14.26"	12"	72"	33.1 lbs	100,000/100,000	30 lbs
<b>7x78" Crystal Fire® Plus Insert</b>	<b>BI778DSILP or BI778DSING</b>		<b>14.26"</b>	<b>7.42"</b>	<b>78"</b>	<b>23.9 lbs</b>	<b>120,000/120,000</b>	<b>30 lbs</b>
12x84" Burner Plate*		BP1284	14.26"	12"	84"	37.2 lbs	120,000/120,000	30 lbs
<b>7x90" Crystal Fire® Plus Insert</b>	<b>BI790DSILP or BI790DSING</b>		<b>14.26"</b>	<b>7.42"</b>	<b>90"</b>	<b>26.2 lbs</b>	<b>130,000/130,000</b>	<b>30 lbs</b>
12x96" Burner Plate*		BP1296	14.26"	12"	96"	41.3 lbs	130,000/130,000	35 lbs
<b>7x102" Crystal Fire® Plus Insert</b>	<b>BI7102DSILP or BI7102DSING</b>		<b>14.26"</b>	<b>7.42"</b>	<b>102"</b>	<b>28.4 lbs</b>	<b>140,000/140,000</b>	<b>35 lbs</b>
12x108" Burner Plate*		BP12108	14.26"	12"	108"	45.4 lbs	140,000/140,000	40 lbs
<b>7x114" Crystal Fire® Plus Insert</b>	<b>BI7114DSILP or BI7114DSING</b>		<b>14.26"</b>	<b>7.42"</b>	<b>114"</b>	<b>30.6 lbs</b>	<b>140,000/140,000</b>	<b>40 lbs</b>
12x120" Burner Plate*		BP12120	14.26"	12"	120"	49.6 lbs	140,000/140,000	45 lbs

\*Specifications for Burner Plate include the coordinating Burner Insert installed.

\*\*Depending on your application, you may need more or less fire media than the suggested amount