



Sierra , Rivers Edge, Grandstone & San Juan Table

Installation Instructions



# Contents

Contents.....	2
Required Tools.....	3
Placing the Table.....	4
Gas Connection.....	5
Igniter Installation.....	6
Placing the Top.....	7
Burner Installation.....	8
Locating Propane tank.....	9
Door Installation.....	10

# Required Tools



- **Utility Knife**

To cut and remove packaging



- **2 Open Ended Wrenches**

To make gas connections



- **Leather Gloves**

To protect hands from rough edges found on the coffee table.



- **One (1) AAA Battery (not included)**

Required for igniter installation for Crystal Fire burners.



- **It is recommended that a minimum of two people assemble and install the Sierra and San Juan Coffee Tables.**

## Placing the Sierra/San Juan table

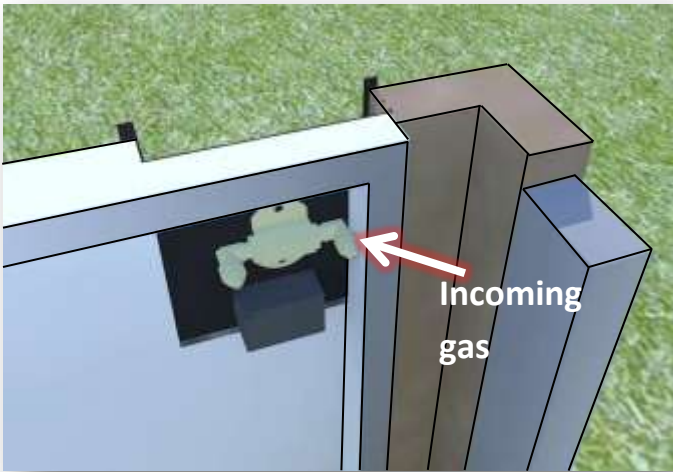
1. Remove access door
2. Remove the base from the box
3. Move the base without door to desired location and set into place.
4. When locating your coffee table, refer to the Crystal Fire manual and maintain clearance to combustibles.



Shown with door removed

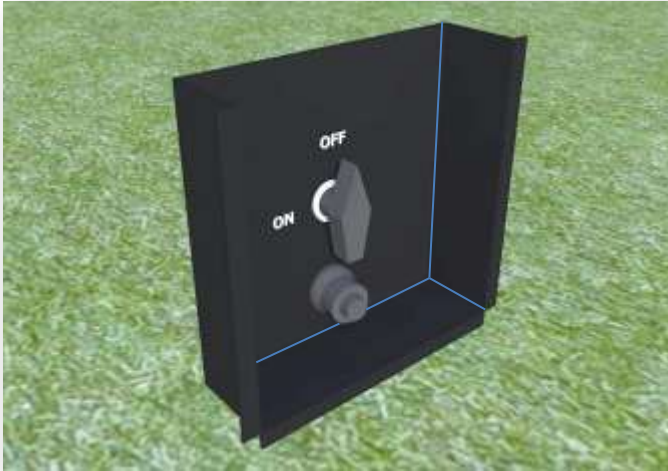
# Gas Connection

1. Connect the incoming gas hose to the valve.  
It is not recommended to use Teflon tape or pipe dope on the connection to the valve with flare fittings.
- LPG installations use the hose and regulator provided with the burner.
  - Natural Gas installations refer to the supplied Crystal Fire Manual.



# Igniter Installation

1. Make sure the valve in in the OFF position



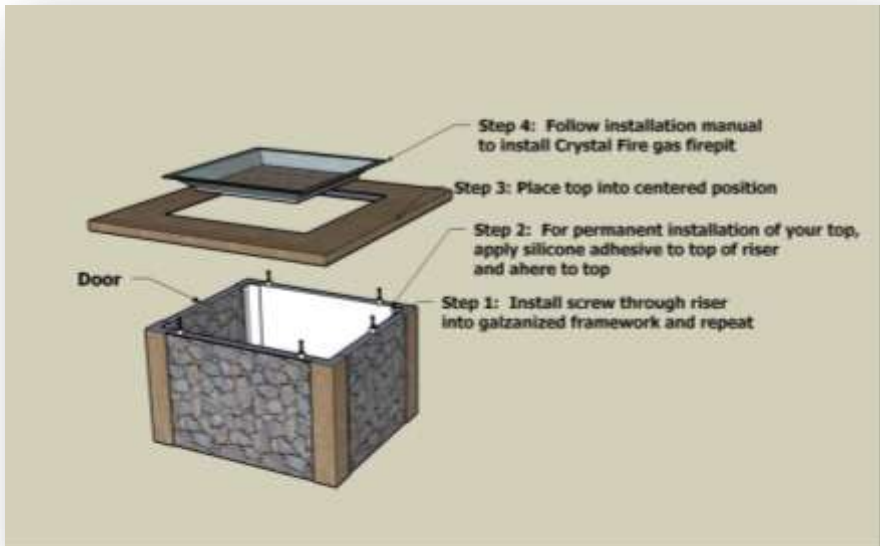
2. Install the igniter by unscrewing the top cap and hex nut counter-clockwise. Once the top cap and nut are separate, place the box portion on the inside of the unit with the threaded body through the hole. Insert one AAA battery positive end outward. Hand tighten the nut and cap to complete the assembly.

## Placing the top

1. With the help of at least one other person, remove Super Cast concrete top from packaging and gently lower on to your fire pit table base. Construction adhesive or silicone may be used on the top of the base for a more permanent placement.

## Special Instructions for CF2424 Burner

Use the following diagram and included hardware for installation of tables containing a CF2424 burner.

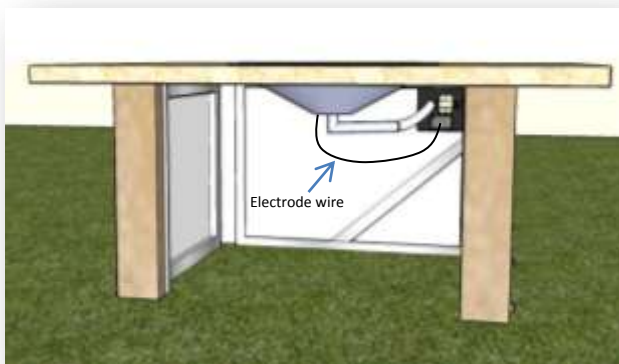


# Burner Installation

*Before Completing this step, read and understand the Crystal Fire owner's manual.*



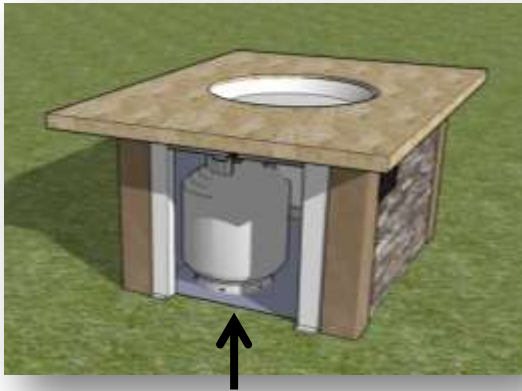
Lower burner on to base



Connect gas line and electrode wire

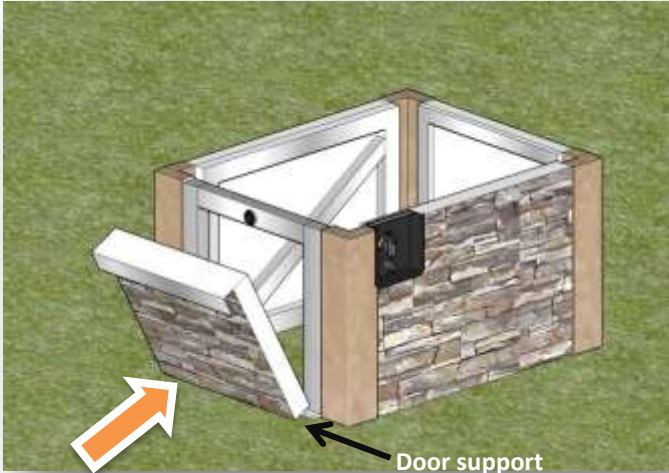
# Locating your Tank

1. Your tank should be positioned so that the fuel can be shut off after each use.
2. Slide the tank into the framework past the line shown below. This is to allow the door to close completely.
3. Confirm all hoses are clear and not touching the burner.



Position tank behind this line

# Door Installation



Set door on supports and close.

Magnet will hold door in closed position.

## **IMPORTANT**

Please consult your Crystal Fire instruction manual for detailed instructions and important information related to hooking up your CF-20 burner, including safety information, proper tightening of connections with two wrenches and full burner setup and lighting instructions.

**DO NOT ATTEMPT TO INSTALL CF-20 BURNER WITHOUT FIRST CONSULTING THE MANUAL. IF YOU ARE UNSURE OF HOW TO COMPLETE THE STEPS OUTLINED, CONSULT A QUALIFIED**

## **WARNING**

After consulting the manual and following instructions, remember; before operating, all gas connections must be fully checked for leaks

**Warranty:** Fire pit tables are covered under a 1-year manufacturer's warranty. Please visit <http://www.outdoorrooms.com/warranty-form> to register your product.



2015 Silver Bell Road • Suite 195 • Eagan, MN 55122  
Toll Free: 1-866-303-4028 • [Sales@OutdoorRooms.com](mailto:Sales@OutdoorRooms.com)

© 2011 The Outdoor GreatRoom Company