



French Colonial Lantern

Installation and Programming Of Remote Control Unit

Included in this kit-

- Remote control receiver
- Wiring harness

Required Tools (not supplied)

- Phillips head screwdriver
- 4 AA Batteries
- 12v A23 Battery
- Ballpoint pen

Step 1

Remove remote receiver unit from packaging and insert four (4) AA Batteries (not included). Battery compartment is accessed by pinching the sides of the unit at the locations shown at right. Battery compartment should slide out easily. After inserting batteries, slide compartment back into housing until it clicks into place.

Step 2

Using a Phillips head screwdriver, four screws holding front cover of lantern in place.

Step 3

Carefully remove one wire from rear of on/off switch on front cover.

Step 4

Replace previously disconnected wire with the **gray** wire from your remote receiver. This will have a female end for plugging into the switch in the front cover.

Step 5

The second wire coming from the remote receiver is **brown** and has a male end. Connect this wire to the wire removed in step 3.

Step 6

Coil wire and insert remote receiver unit into lantern housing on the left side of gas line.

Programming Your Remote

Your remote receiver has three modes;

On- This allows the unit to be constantly turned on when outer lantern switch is in the "on" position.

Off- This keeps the unit off regardless of lantern switch position.

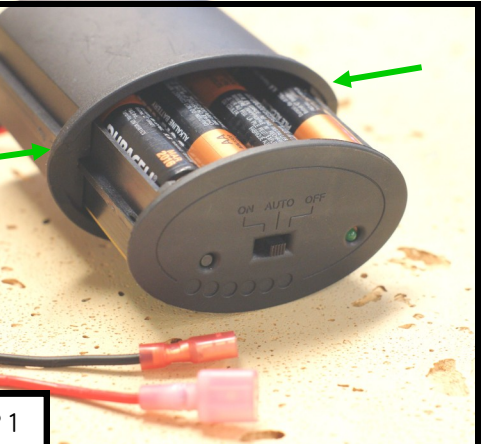
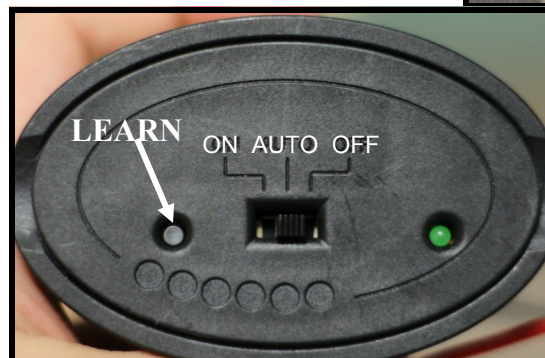
Auto- (**recommended setting**) This allows for remote operation of lantern.

NOTE: In order for remote operation to work, On/off switch on front of lantern needs to be turned on, and remote receiver set to AUTO.

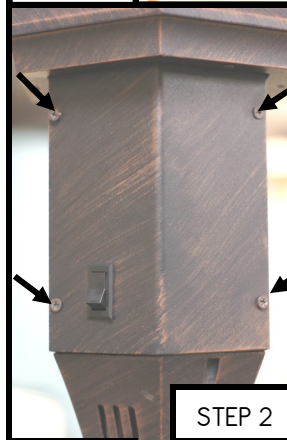
To Program your remote;

With receiver set to "AUTO", using a ballpoint pen, depress learn button on receiver until an audible chirp is heard and green indicator light begins flashing.

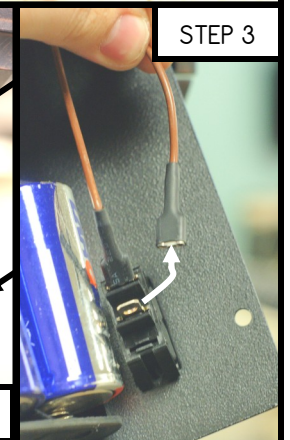
Press the Learn button on your remote until two chirps are heard in rapid. This confirms learning process has been completed and lantern is ready for remote operation.



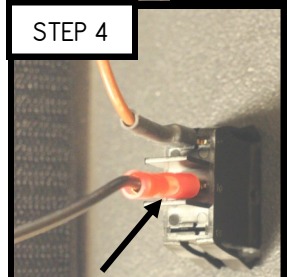
STEP 1



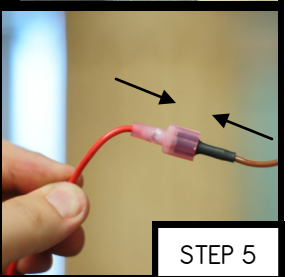
STEP 2



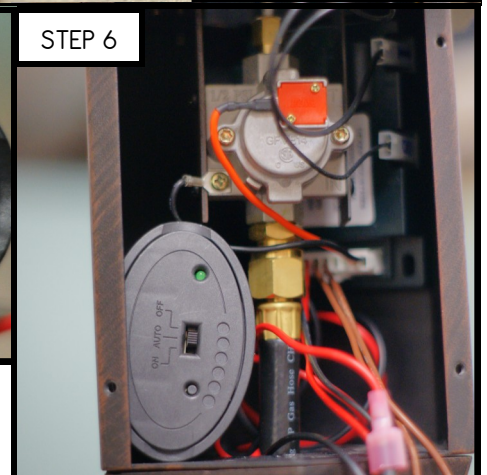
STEP 3



STEP 4



STEP 5



STEP 6